

Public-Private Partnerships in solving complex labor issues in supply chains

July 2017





The JTI journey starts here

Setting clear standards for safe and fair work

Agricultural Labor Practices (ALP)



Child labor

- Minimum age
- Hazardous work

Rights of workers

- Respectful treatment
- Forced labor
- Fair remuneration
- Working hours
- Freedom of association

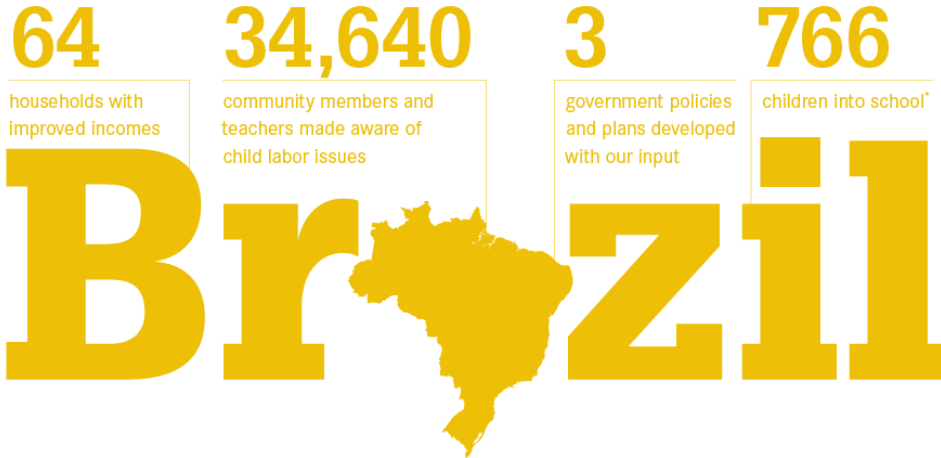
Workplace health & safety

- Farm safety
- Prevention of Green Tobacco Sickness (GTS)
- Crop Protection Agent (CPA) management
- Machinery and hand tools
- Accommodation and wellbeing
- First aid



2016 milestones

We continuously monitor the impact of our efforts



*Children enrolled in formal and non-formal education and/or After School Programs (Brazil)

9,742 more children in school

ARISE seeks to end child labor in tobacco growing communities where JTI sources tobacco leaf by supporting and encouraging education. We work with those who have the most to gain, and with those who have the power to change things. We challenge and change mindsets to stimulate and inspire new opportunities. We believe that a future without child labor is possible.



Public Private Partnerships deliver

- *Aligned to G20 commitment, business and human rights guidelines*
- *Standards aligned with international conventions*
- *Aim is to improve labor issues in global supply chains*
- *We are not the experts in worst forms of child labor, trafficked humans, forced labor or modern forms of slavery*



Enterprising
Open
Challenging